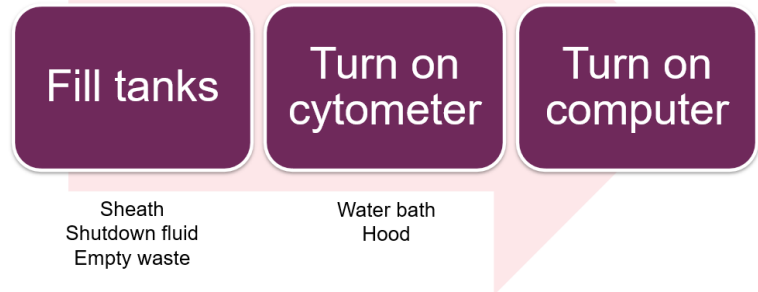
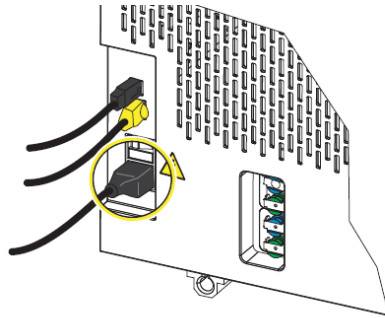


Daily Startup(開機)

A. Before Daily Startup(開機前設定)

1. 確認 sheath 填滿
2. 確認廢液清乾淨
3. 開機器在機器左後方

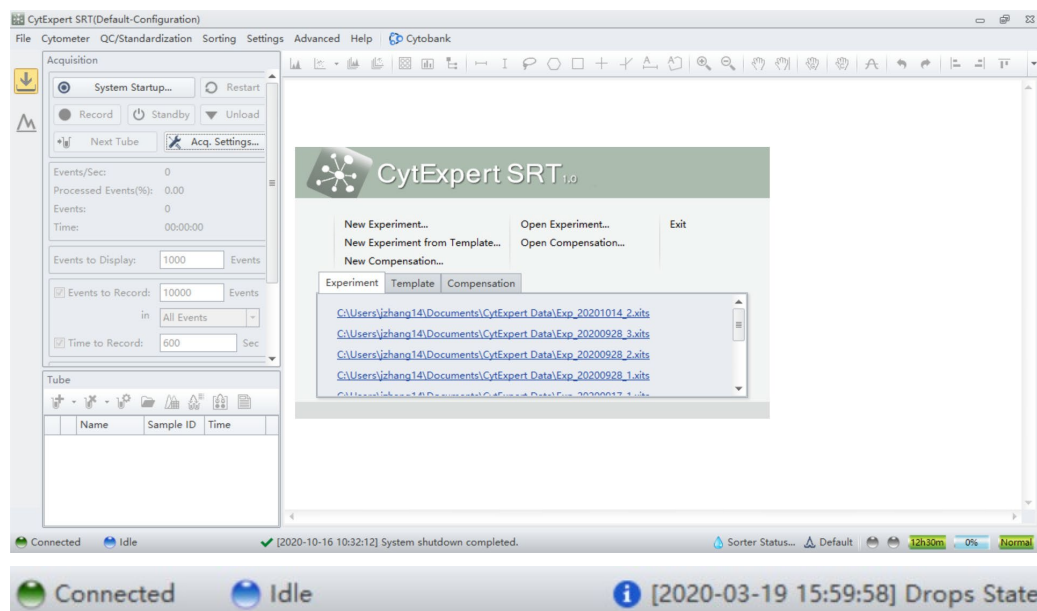


4. 開電腦

B. 開機:



1. 開啟軟體, 點擊
2. 確認機器與軟體連線

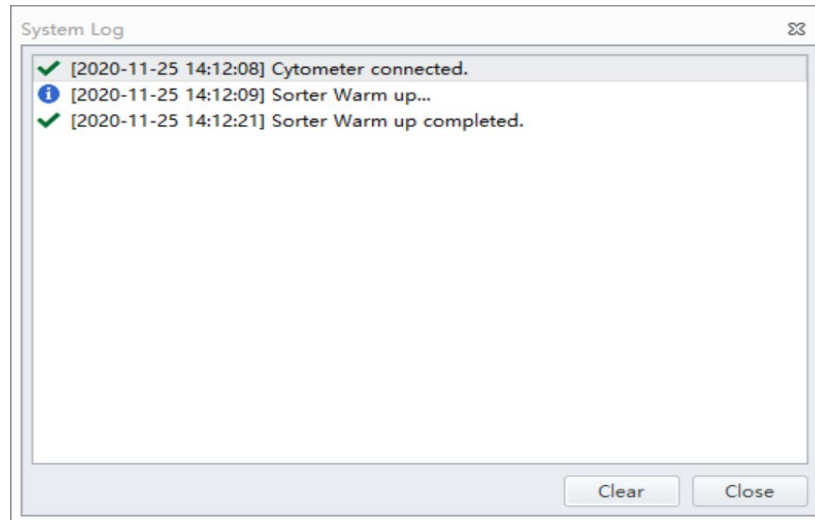


如呈現綠色燈號代表以連線

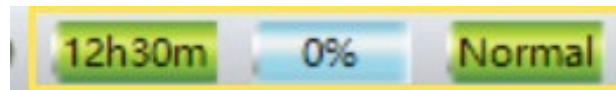


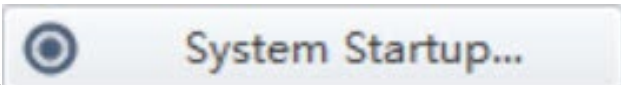
如呈鮮紅色燈號代表有問題

點選 status information 確認是否有錯誤訊息

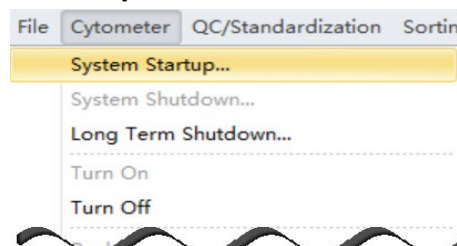


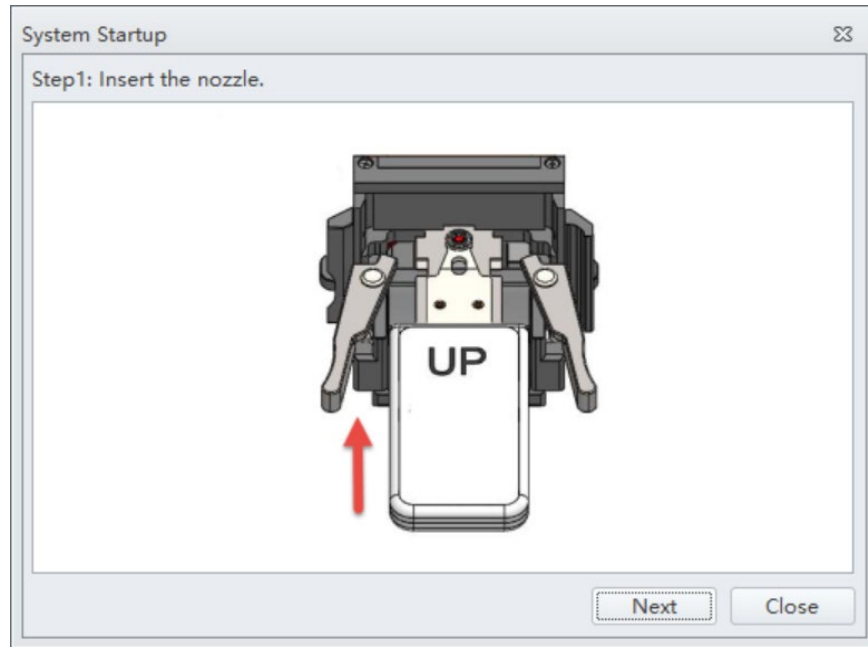
3. 確認 Sheath, Waste and Shutdown flow 是否有足夠



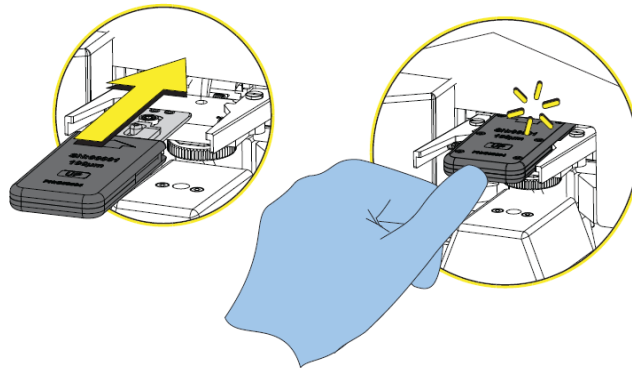
4. 點選  或 System

Startup



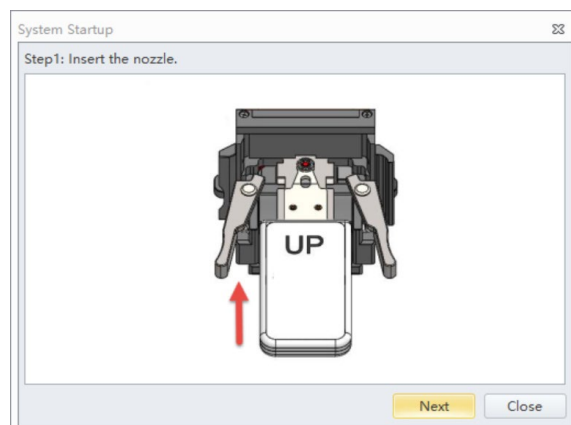


5. 打開門然後將 Nozzle 裝入，如有卡住會聽到【喀】一聲

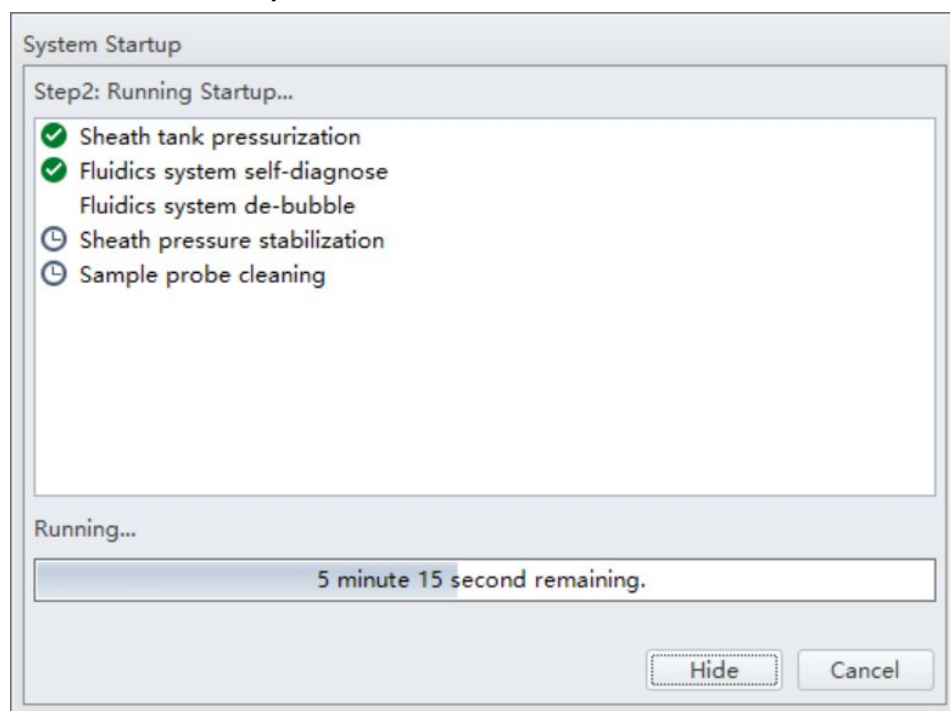


6. 裝好後將門關上

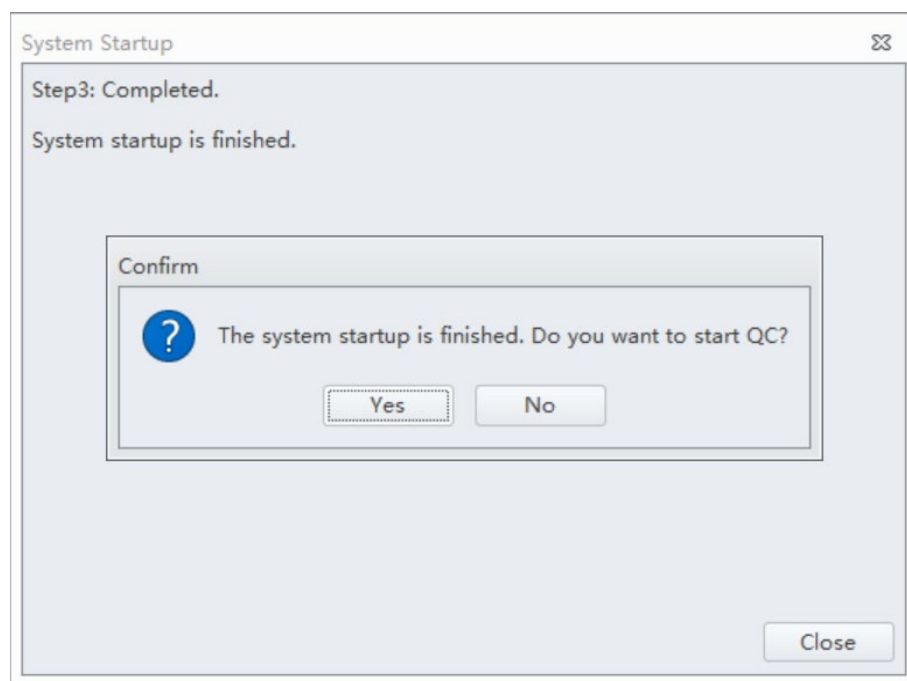
7. 點選 next



系統會自動充壓,排氣泡.....需大約十分鐘

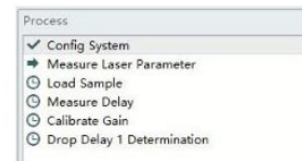
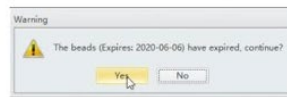
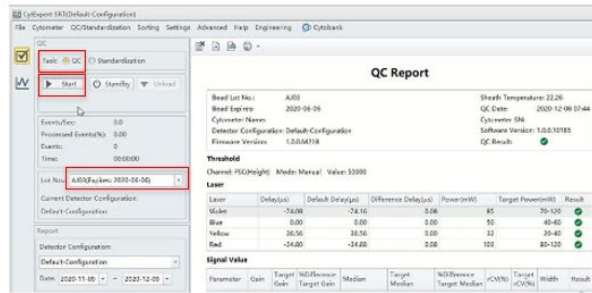



直到視窗出現以下畫面

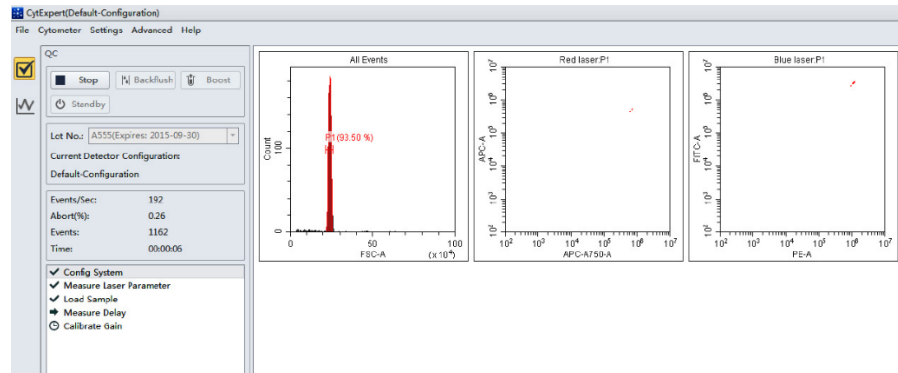


8. 如果要跑 QC 就直接點選 YES
即完成開機步驟

二、Performing QC



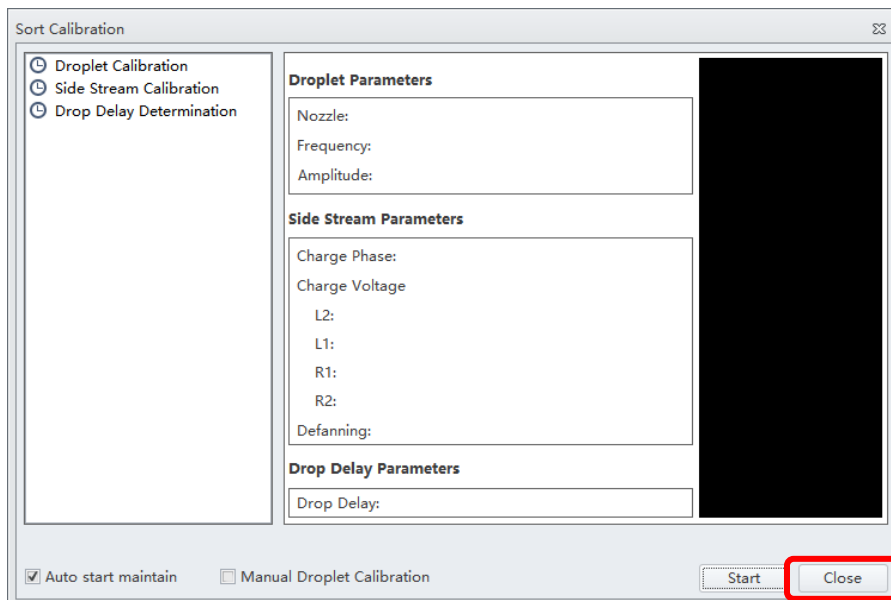
- (1). 將 CytoFLEX Daily QC Fluorospheres 自冰箱取出，先震盪讓沉澱的 QC Fluorospheres 均勻混合。
- (2). 滴 3-4 滴於 Flow tube 中，(此製備好的品管液可於 4°C 冰箱避光保存 5 天)，放置於上樣架準備上機。
- (3). 由 QC 進入 Start QC
- (4). 選擇 CytoFLEX Daily QC 的 Lot No.例如：A555(Expires: 2015-09-30)。
- (5). 點擊 Start  即執行 CytoFLEX SRT 的 QC 步驟，開始品管液分析。
如下圖顯示：



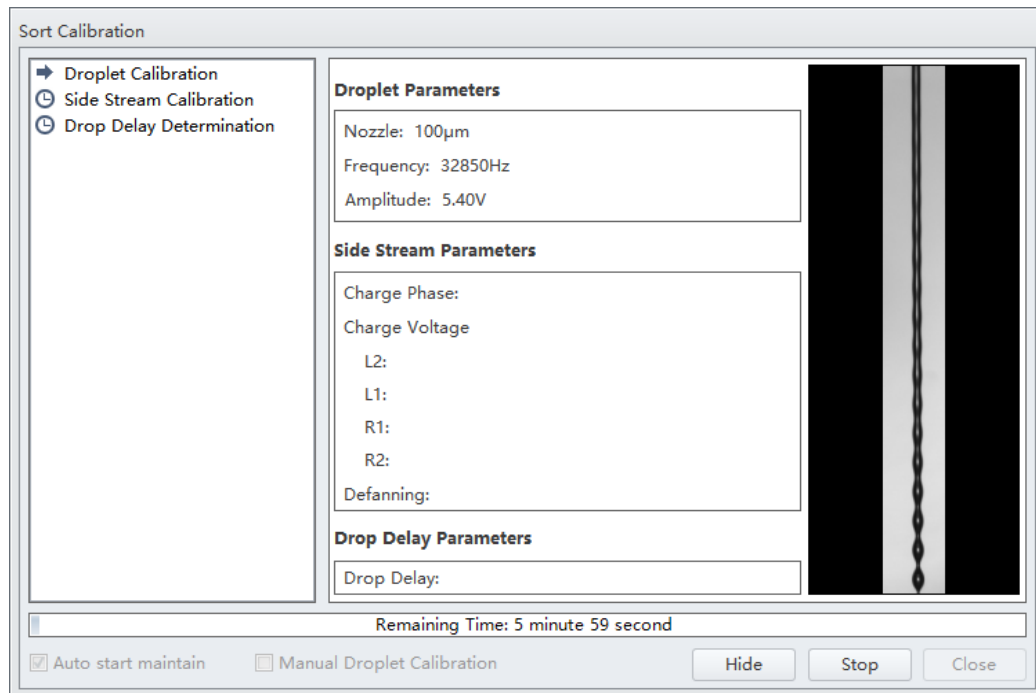
(6). 檢視 QC Report 結果，CytoFLEX Daily QC 品管液所測得的前向散射光、側向散射光以，每個螢光參數 FL1 - FL15 及 DD1 是否都通過原廠規範條件呈現綠色打勾 Pass 。此時表示機器穩定無問題，可繼續進行樣品分析。點選 Yes 開始進行 Sort Calibration now.

三、自動分選設定(Automatic Sort Calibration)

1. 點選 Initialize
2. 在點選 Sort Calibration

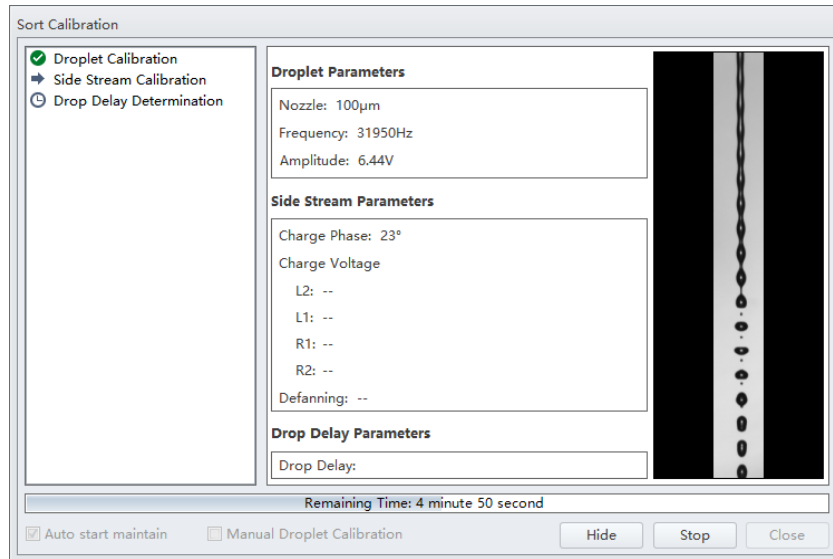


3. 會出現 sort calibration 視窗點選 start
系統將會自動進行 Sorting 設定



包含了:

- **Frequency:** The rate at which the crystal in the nozzle vibrates.
- **Amplitude:** The force with which the crystal in the nozzle vibrates.
- **Charge Phase:** Used to determine where the inconsistent charging occurs and then optimize for single side stream.
- **Charge Voltage:** Used to adjust the amount of charge applied to the droplet.
- **Defanning:** Used to place a little residual charge on the droplet following a charged droplet to minimize the potential impact of charged droplet.
- **Drop Delay:** Defined as the amount of time it takes for a particle to travel from the interrogation point of the primary laser to the last attached drop in the stream.



4. 當 Sort Calibration procedures 完成後請點選 Close

