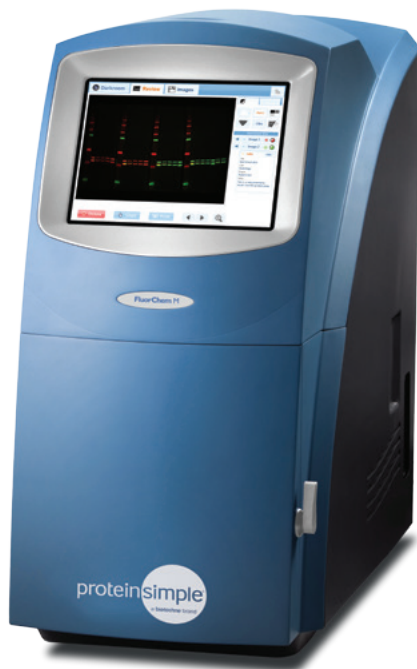


FluorChem M System

Multiplex Fluorescent Western Blots

Combining three key elements — high performance, unmatched ease of operation and true application flexibility — FluorChem M takes the complication out of imaging from start to finish. No darkroom, no training, no computer required. Its unique, compact design incorporates state-of-the-art CCD optical technology with an intuitive touchscreen interface for effortless detection of multicolor fluorescent, chemiluminescent, UV-excited and colorimetric gels and blots.



8.3 MEGAPIXEL RESOLUTION

Cooled CCD with automated acquisition optics provide exceptional image quality.

TOUCHSCREEN OPERATION

Acquire, review, save and print images using simple on-screen commands.

MULTIPLEX FLUORESCENT IMAGING

Multicolor LEDs with 3 excitation channels and a motorized 10-position emission filter wheel enable a wide range of imaging applications.

IMAGE STORAGE AND REMOTE ACCESS

Integrated hard drive and USB and network ports allow for automated image archiving, remote browser-based access and control, and printing.

WHITE LIGHT IMAGING

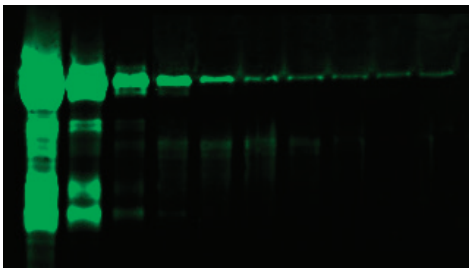
White lights provide rapid sample positioning and imaging of Western blot ladders or colorimetric protein gels. Provides easy sample positioning and imaging of colorimetric blots and colony plates.

UV IMAGING

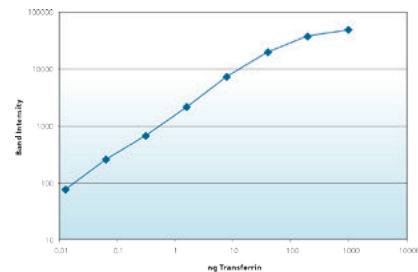
Pull out UV transilluminator for easy loading and imaging of DNA and protein gels.

Clearly Quantitative

FluorChem M provides a complete, quantitative solution for Western blot detection and analysis. Direct multicolor fluorescent detection offers greater linearity and dynamic range — resulting in superior band clarity and proportional quantitative accuracy.



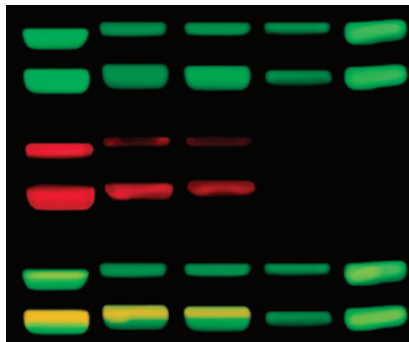
Serial dilutions of Transferrin from 1.0 μ g to 0.5 pg were detected by Western blot using MultiFluor Green secondary antibody. The quantitative linear range was above 3 orders of magnitude with a 0.5 pg limit of detection.



Serial dilutions of Transferrin were detected by Western blot using MultiFluor Green secondary antibody. The dynamic range of detection was approximately 5 logs.

Identify Co-Migrating Proteins

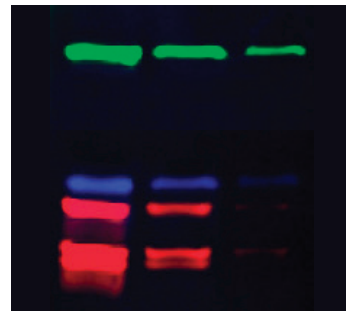
Proteins that overlap, such as native and phosphorylated isoforms, can be probed on the same blot. Image data from each fluorescent channel can be overlaid or viewed independently to readily detect subtle mobility shifts and resolve overlapping bands.



HeLa lysates probed with anti-ERK1/2 and anti-pERK1/2 primary antibodies followed by MultiFluor Green and MultiFluor Red secondary antibodies.

Detect Multiple Proteins Simultaneously

Save time and precious samples by detecting multiple proteins on the same blot. The need to strip and reprobe is eliminated, resulting in higher data integrity and shorter assay times. Band intensity values can be normalized to another protein or loading control to correct for inaccuracies.



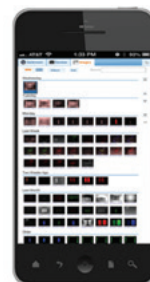
HeLa lysates at 4 µg, 1 µg and 0.25 µg probed with anti-Hsp-70, anti-β-Actin and anti-ERK1/2 primary antibodies followed by MultiFluor Green, MultiFluor Blue, and MultiFluor Red secondary antibodies.

Specifications

FEATURE	SPECIFICATION
Dynamic Range	Up to 65,536 grayscale
Field of View	16 cm x 12 cm maximum
Detector	8.3 megapixel, scientific-grade CCD, 16-bit A/D, thermo-electrically cooled to -30 °C, absolute and regulated, 5-minute cool-down time
Optics	50-mm, f/1.4 motorized fixed lens
Light Sources	RGB fluorescent epi-excitation: 632 nm red, 534 nm green and 475 nm blue LEDs, 302 nm UV transilluminator (365 nm optional), Trans-white light via white light conversion screen, Trans-blue light via optional blue light conversion screen
Emission Filters	10-position motorized filter wheel with 710, 607, 593 and 537 nm filters
Computer	Integrated computer with 10.4-inch LCD touchscreen, 480 GB solid-state hard drive
Software	On-board Digital Darkroom for remote access, operation and analysis by any web-browser enabled computer or device. AlphaView for standalone Windows PC analysis.
Size	32 cm W x 62 cm D x 62 cm H
Weight	34 kg
Power	100–230 V AC, 345 W
Certifications	CE, TUV

The Software-Free Solution

Use a web browser on your PC, Mac, tablet or smartphone to acquire, review and analyze your images with no external software or licenses to maintain.



Go anywhere with remote access Digital Darkroom software.

FluorChem M system:
part # 92-15312-00

